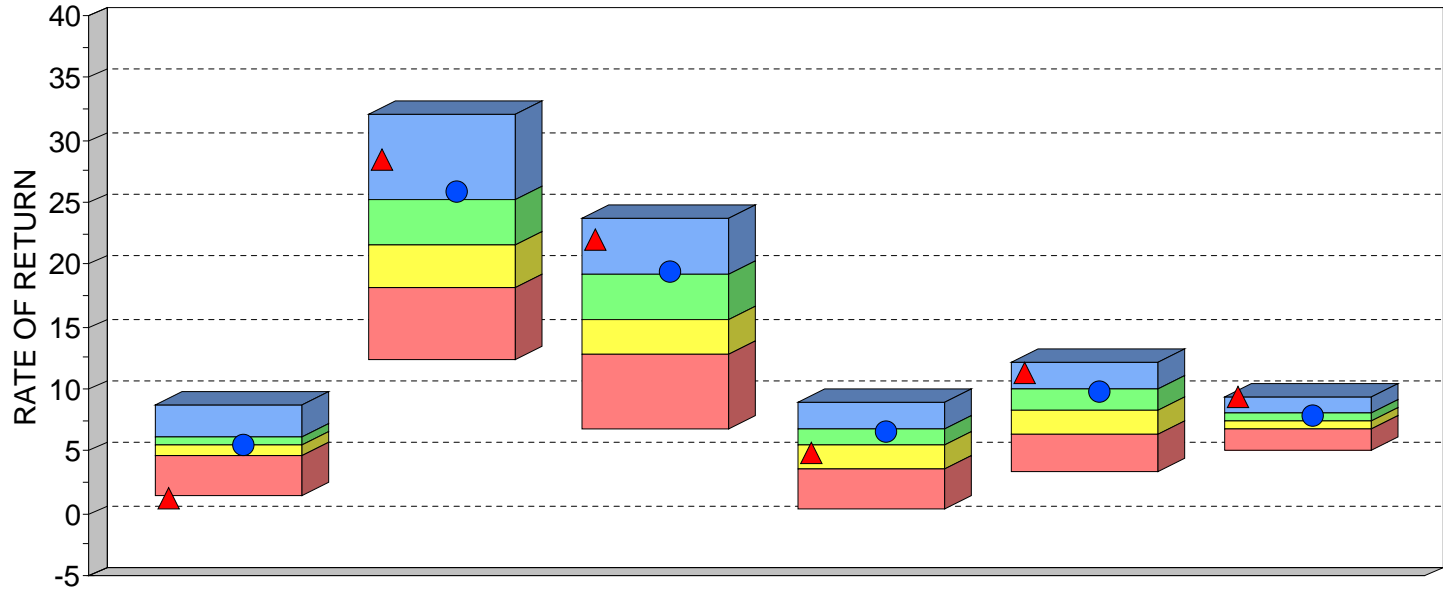




**MARTIN CAPITAL MCA CONSERVATIVE
 QUARTILE RANKING BAR
 PSN US BALANCED
 PERIODS ENDING SEPTEMBER 30, 2024**



| | Latest Quarter | 1 Year | 2 Years | 3 Years | 5 Years | Since Inception |
|----------------|----------------|--------|---------|---------|---------|-----------------|
| HIGH (0.05) | 8.77 | 32.00 | 23.78 | 8.86 | 12.14 | 9.46 |
| FIRST QUARTILE | 6.18 | 25.31 | 19.23 | 6.74 | 10.06 | 8.07 |
| MEDIAN | 5.43 | 21.64 | 15.63 | 5.50 | 8.27 | 7.51 |
| THIRD QUARTILE | 4.69 | 18.08 | 12.84 | 3.57 | 6.36 | 6.84 |
| LOW (0.95) | 1.50 | 12.35 | 6.89 | 0.36 | 3.35 | 5.14 |
| MEAN | 5.40 | 21.72 | 15.80 | 5.21 | 8.11 | 7.40 |
| VALID COUNT | 208 | 207 | 207 | 206 | 198 | 76 |

| | Latest Quarter | | 1 Year | | 2 Years | | 3 Years | | 5 Years | | Since Inception | |
|-----------------------------------|----------------|------|--------|------|---------|------|---------|------|---------|------|-----------------|------|
| | VALUE | RANK | VALUE | RANK | VALUE | RANK | VALUE | RANK | VALUE | RANK | VALUE | RANK |
| ▲ Martin Capital MCA Conservative | 1.12 | 99 | 28.48 | 6 | 22.06 | 5 | 4.90 | 58 | 11.37 | 6 | 9.40 | 2 |
| ● 60% SP500/40% BIm Govt Credit | 5.58 | 44 | 25.87 | 23 | 19.45 | 22 | 6.65 | 26 | 9.85 | 27 | 7.95 | 30 |